

## B SIMILPELLE FAUX LEATHER

63% PU - 29% COT - 8% PES

**Abrasioni** Abrasion

**Resistenza alla luce** Lightfastness

**Solidità colori al sudore** Colour fastness to sweat

**Robustezza** Tear strenght

more information [www.flusko.it](http://www.flusko.it)

UNI EN ISO 12947-2 150.000 Martindale

UNI EN ISO 105-B02 5/6

UNI EN ISO 105-E04 4/5

UNI EN ISO 12947-2 150.000 cicli

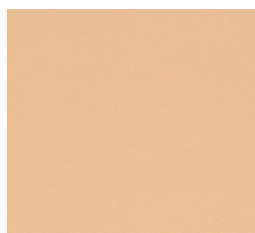
### Resistenza al fuoco Flame resistance

UNI 9175 classe 11M  
EN 1021-1  
EN 1021-2  
BS 5852-1 cigarette test  
BS 5852-1 match test  
BS 5852 crib 5  
TB 117:2013  
IMO FTP CODE 2010  
ONORM B 3825



**Formula "Open"**  
"Open" formula

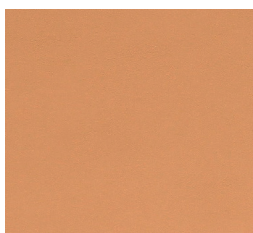
N. Colori N. Colors **14**



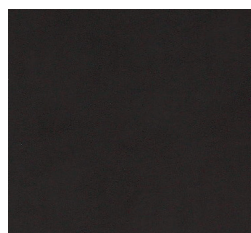
350



1050



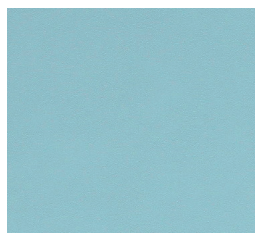
1150



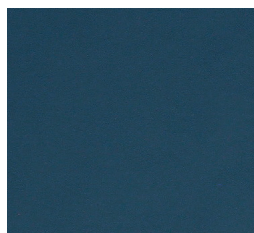
1350



1550



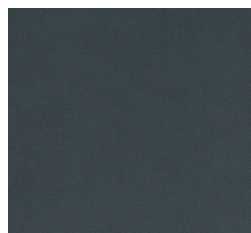
1750



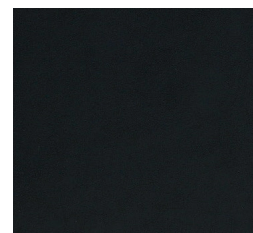
1950



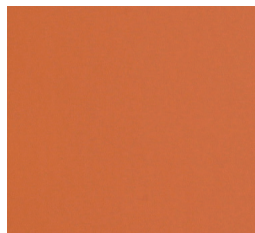
2050



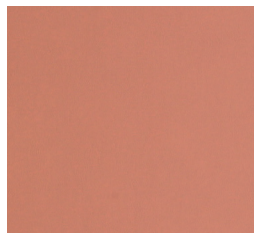
2150



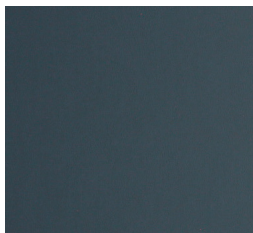
2250



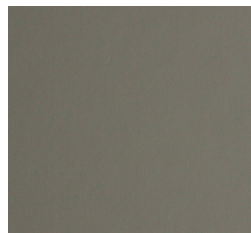
3250



4050



4250



4450