

E TESSUTO FABRIC

90% new wool worsted 10% nylon

Abrasioni Abrasion

EN ISO 12947

100.000 Martindale

Resistenza alla luce Lightfastness

ISO 105-B02

Note 5-7

Resistenza sfregamento a secco Fastness to dry rubbing

ISO 105-X12

Dry Note 4-5 / Wet note 3-5

Pilling Pilling

EN ISO 12945

Note 4

more information www.kvadrat.dk

Resistenza al fuoco

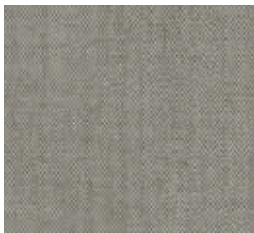
Flame resistance

AS/NZS 1530.3
AS/NZS 3837 class 2
ASTM E84 Class A Unadhered
ASTM E84 Class A Adhered
BS 5852 Crib 5 with treatment
BS 5852 ignition source 3
BS 5852 Part 1
EN 1021-1/2
GB 50222 B1 with treatment (Chinese)
IMO FTP Code 2010 Part 8
NF D 60 013 - NFPA 260
ONORM B1/Q1
SN 198 898 5.3 with treatment
UNI 9175 11M
US Cal. Bull. 117-2013

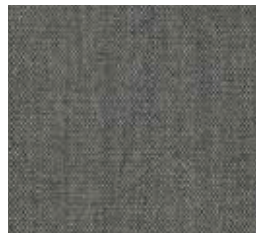


Formula "Open"
"Open" formula

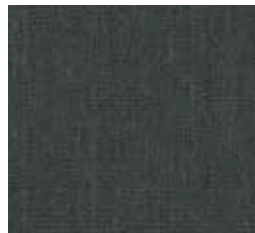
N. Colori N. Colors **14**



126



133



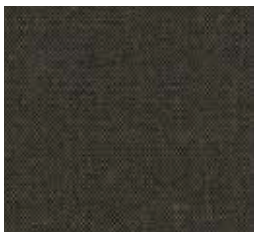
163



196



233



356



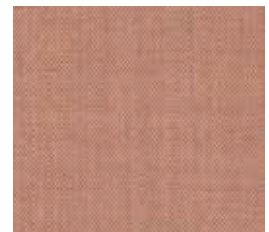
433



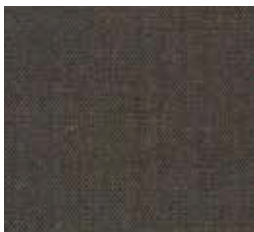
452



566



612



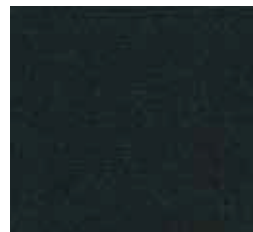
672



906



954



996